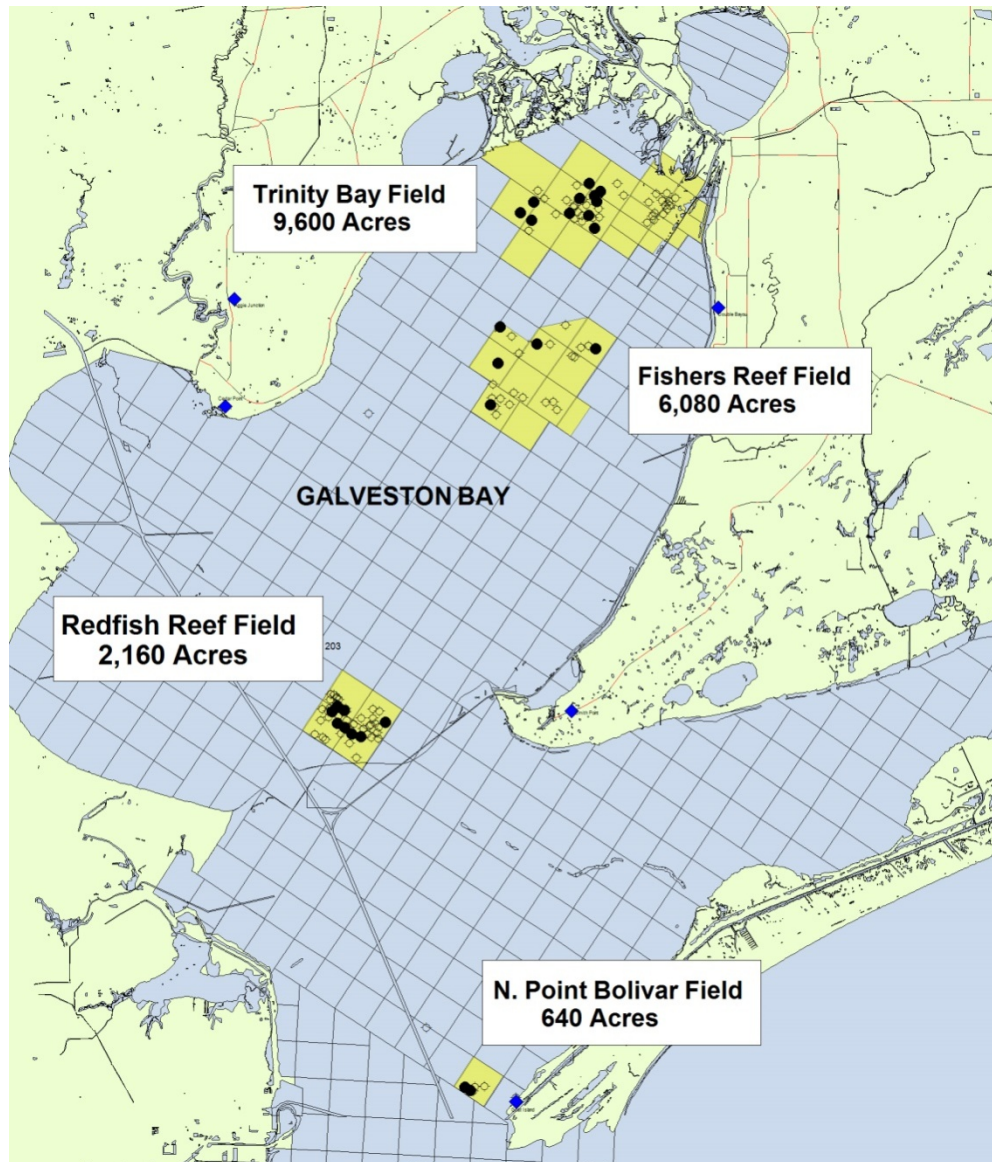


Galveston Bay Energy, LLC

Galveston Bay, Texas



Galveston Bay Energy. LLC



- **19,336 Acres Held by Production (HBP)**
- **Discovered by Exxon in 1960-70s**
- **Total Cumulative Production: 25 Million Barrels Oil, 1.5 TCF Gas**
- **Total Wellbores: 127**
- **Currently Producing: 23**
- **2015 Average Production: 411 BOEPD**
- **Expected August Production: 220BOPD + 2000MCFD**

Galveston Bay, Texas

19,336 Acres HBP



Subsurface:

- 50 locations under technical evaluation for potential workover / development projects
- 25 productive Frio Reservoirs
- Vicksburg, Yegua and Frio Sand Prospects

Infrastructure:

- First class - rebuilt since Hurricane Ike
- Designed to withstand Cat 4 Hurricane
- \$15-20 million replacement value includes equipment for increased production levels
- Valuable asset for exploration and development prospects

Galveston Bay, Texas

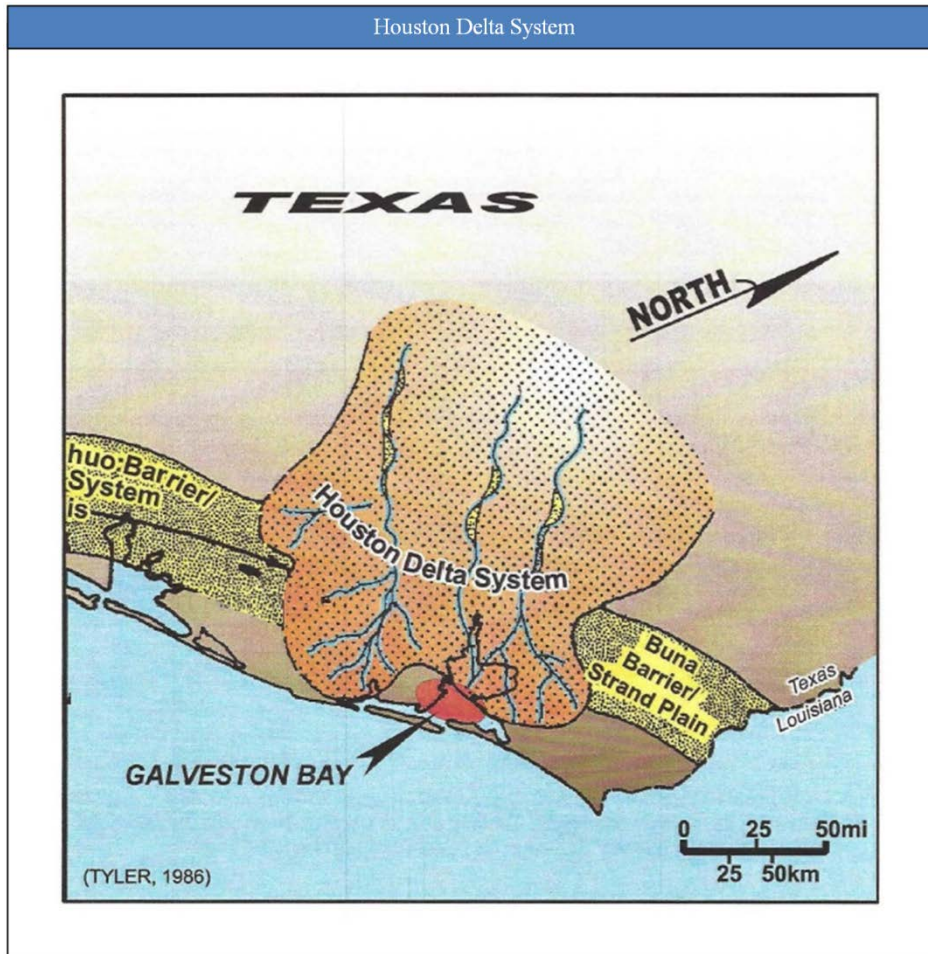
19,336 Acres HBP



Analogous Discoveries

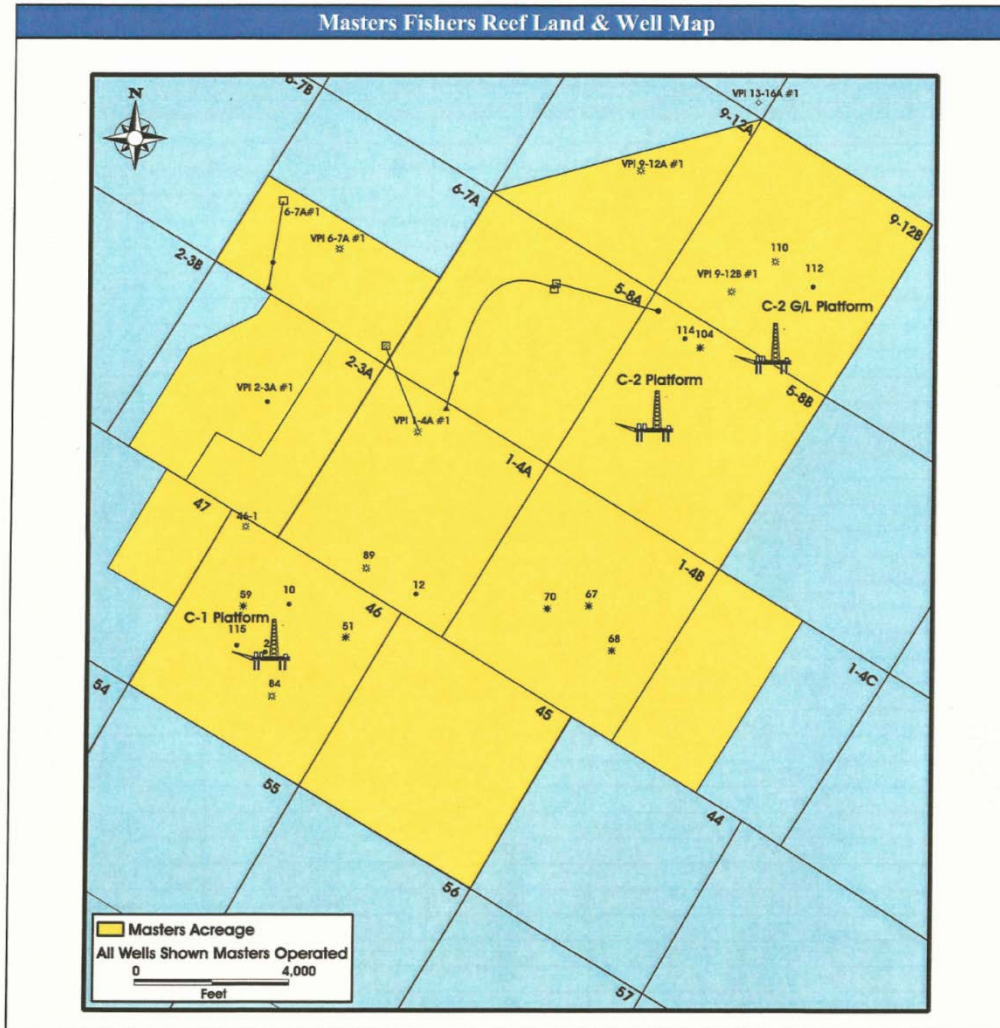
- Eagle Bay Field – 300 BCF gas and 30 MMBO
- Umbrella Point Field – 15 BCF gas and 2 MMBO
- Vinceburg Field – 20 BCF and 5 MMBO

Galveston Bay, Texas



STRATIGRAPHIC COLUMN UPPER TEXAS GULF COAST										
ERA	SYSTEM	SERIES	GROUP	FORMATION	INDEX FORAMINIFERA	COLOR				
C E N T E R T A R Y	QUATERNARY	HOLOCENE (RECENT)					Red			
		PLEISTOCENE				TRINODINELLA SP. COSTELLARIA SP.				
	MIOCENE	FLEMING	LAGARTO	UPPER		TRINODINELLA SP. COSTELLARIA SP. SUCCESSIONA SP. TESTOLARIA SP. TESTOLARIA SP. SPANISH SUCCESSIONA SPANISH COSTELLARIA SP. DINODINELLA SPANISH	Light Green			
				LOWER		AMPHISTEENA "Y" SUCCESSIONA SPANISH MARGOLINA ACEROSUM EPHODINELLA SPANISH PILAEOLINA SPANISH LANTICOLINA SPANISH				
			OAKVILLE					SUCCESSIONA SPANISH SUCCESSIONA SPANISH MARGOLINA ACEROSUM MARGOLINA ACEROSUM MARGOLINA ACEROSUM	Purple	
				FRIO	UPPER			COCODINELLA SPANISH MARGOLINA ACEROSUM SUCCESSIONA SPANISH SUCCESSIONA SPANISH		Yellow
					LOWER			TESTOLARIA SPANISH MARGOLINA ACEROSUM		
		CATAROLA						Yellow		
			FRIO	UPPER		COCODINELLA SPANISH MARGOLINA ACEROSUM SUCCESSIONA SPANISH SUCCESSIONA SPANISH	Yellow			
				LOWER		TESTOLARIA SPANISH MARGOLINA ACEROSUM				
			VICKSBURG				TESTOLARIA SPANISH MARGOLINA ACEROSUM COCODINELLA SPANISH COCODINELLA SPANISH		Orange	
				JACKSON			WHITSETT MELROY WILLIAMS CADDIS MOODY'S BRANCH			White
						SUCCESSIONA SPANISH MARGOLINA ACEROSUM TESTOLARIA SPANISH TESTOLARIA SPANISH TESTOLARIA SPANISH				
	Eocene	CALIBORNE			COCKFIELD	MARGOLINA ACEROSUM COCODINELLA SPANISH SUCCESSIONA SPANISH	Pink			
					YEGA	SUCCESSIONA SPANISH				
							Green			
	WILCOX						Green			

Galveston Bay, Texas



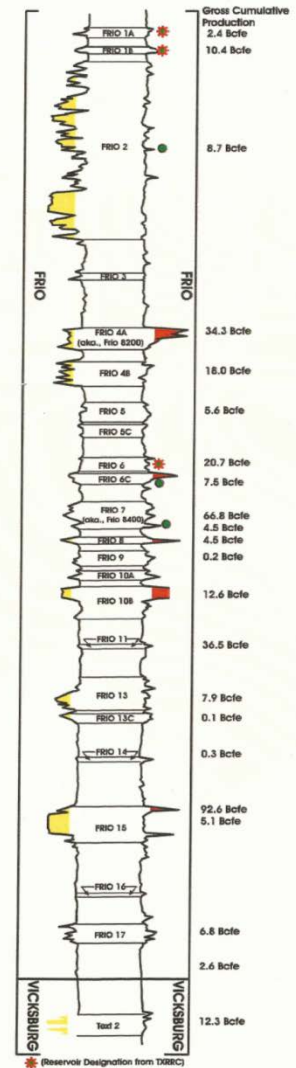
Fishers Reef Field

- 6045 acres
- Water depth 8-12 feet
- Humble Oil discovery 1940
- 20 Frio sands from 3000'-10,000'
- Over 280 BCF gas cumulative production
- 9 producing wells
- 17 shut in wells

Galveston Bay, Texas

Fishers Reef Well	
Well Name	Status
46-1	SI
46-2 P+D	SI
46-10	PDP
46-51 P+D	PDP
46-115	PDP
46-59D	SI
46-59F	SI
46-84D	SI
46-84F	SI
1-4A-1	SI
1-4A-12	SI
1-4A-89D	SI
1-4A-89F	SI
1-4B-67D	SI
1-4B-67F	SI
1-4B-67H	SI
1-4B-68D	SI
1-4B-68F	SI
1-4B-68H	SI
1-4B-70D	SI
1-4B-70F	SI
1-4B-70H	SI
2-3A -1	PDP
2-3A -104 P+D	SI
5-8A-1*	PDP
5-8A-2*	PDP
5-8B-104 P+D	SI
5-8B-114 F-5A Pat.RF	SI
6-7A-1*	PDP
6-7A-1	SI
9-12A-1	SI
9-12B-1	PDP
9-12B-112 PRODUCTION	SI
9-12B-110L P+D	SI
9-12B-110U P+D	SI
Point Barrow-1	SWD
13-16A -1	SI

Fishers Reef Type Log with Cumulative Production

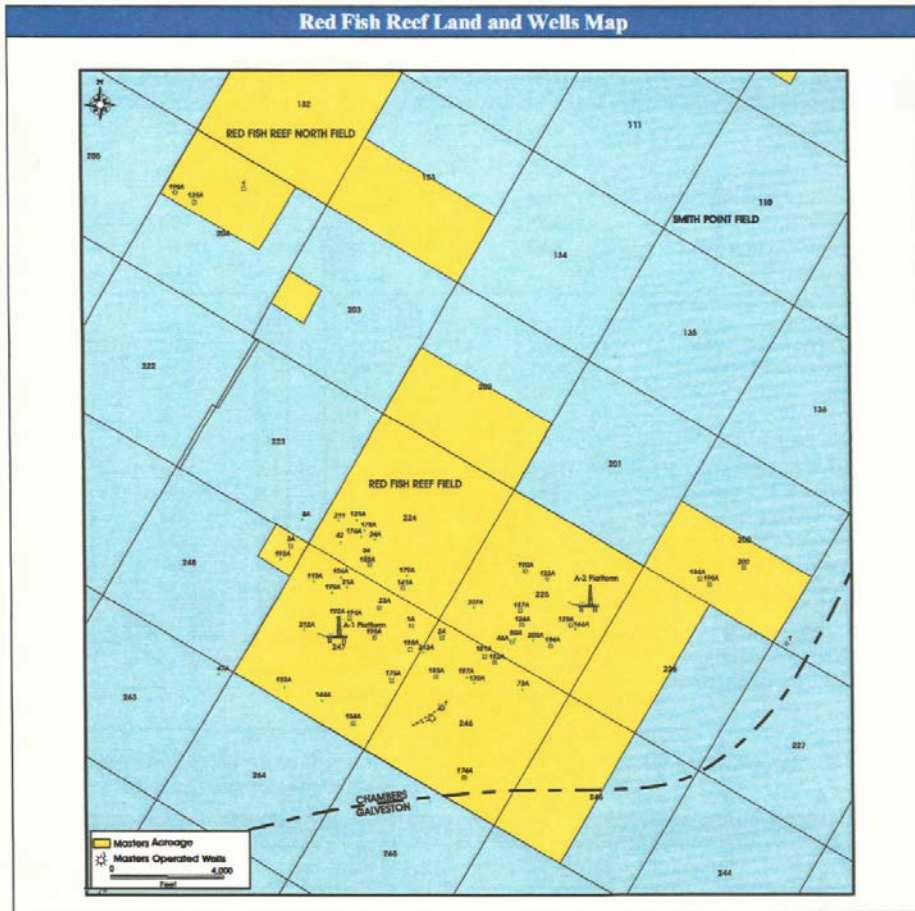


Galveston Bay, Texas

Fishers Reef - Cumulative Production by Reservoir					
Reservoir	Oil Cum	Gas Cum	Water Cum	Mcf Cum	% Cum
FRIO 15	9,998,822	37,755,454	24,818,065	97,748,386	23.8%
FRIO 8400	684,095	62,744,710	933,425	66,849,280	40.1%
FRIO 11	358,429	34,382,520	97,156	36,533,094	49.1%
FRIO 8200	496,721	31,400,936	607,401	34,381,262	57.4%
FRIO 8800	200,939	31,749,090	3,429,010	32,954,724	65.5%
FRIO 6/A/C	950,064	22,659,914	4,255,125	28,360,298	72.4%
FRIO 10/A/B	278,335	16,797,387	514,562	18,467,397	76.9%
FRIO 4/B	2,555,020	2,696,919	3,932,063	18,027,039	81.3%
FRIO 9800	991,675	7,017,458	2,723,657	12,967,508	84.5%
FRIO 1/A/B	978,022	7,013,001	815,796	12,881,133	87.6%
FRIO 17/B	719,218	5,168,169	815,730	9,483,477	89.9%
FRIO 2	1,202,738	1,528,315	9,278	8,744,743	92.1%
FRIO 13/C	101,269	7,377,501	486,665	7,985,115	94.0%
FRIO 5/A	91,991	7,100,034	59,190	7,651,980	95.9%
All Other Reservoirs	1,409,099	8,485,067	3,093,677	16,939,661	100.0%
Total	21,016,437	283,876,475	46,590,800	409,975,097	

*Twelve reservoirs make up the "All Other Reservoirs" volumes.
Source: IHS

Galveston Bay, Texas



Redfish Reef Field

- 3560 acres
- Water depth 10 feet
- Humble Oil discovery 1940
- 25 Frio reservoirs from 3000'-10,000'
- Over 800 BCF gas and 40 MMBO cumulative production
- 4 producing and 41 shut in wells

Galveston Bay, Texas

Red Fish Reef - Cumulative Production by Reservoir					
Reservoir	Oil Cum	Gas Cum	Water Cum	Mefe Cum	% Cum
Frio 15/A/B/C/D/E/F	6,405,729	198,130,161	2,070,710	236,564,535	23.2%
Frio 1/C/E	5,221,867	171,444,117	915,597	202,775,319	43.1%
Frio 11/A/B	2,032,483	107,034,062	1,392,563	119,228,960	54.8%
Frio 4/A	5,801,776	47,535,121	4,678,299	82,345,777	62.9%
Frio	5,040,221	33,035,923	368,684	63,277,249	69.1%
Frio 2/A/B	7,315,677	15,507,866	5,344,291	59,401,928	74.9%
Frio 10	609,180	30,941,407	304,043	34,596,487	78.3%
Frio 9	1,019,487	27,104,032	144,302	33,220,954	81.6%
Frio 22/A/B/C	372,498	21,767,160	430,068	24,002,148	83.9%
Frio 17	603,786	17,407,273	333,114	21,029,989	86.0%
Miocene 3400	4,658	17,713,344	24,620	17,741,292	87.8%
Frio 5	363,476	13,667,529	336,945	15,848,385	89.3%
Frio 25/A	1,203,189	7,717,766	4,629,921	14,936,900	90.8%
Miocene 3000	10,051	14,211,571	67,108	14,271,877	92.2%
Frio 20	88,120	12,503,661	160	13,032,381	93.5%
Frio 6	689,595	6,014,927	791,935	10,152,497	94.5%
Frio 8700	0	8,597,972	0	8,597,972	95.3%
All Other Reservoirs	2,241,359	34,494,527	4,463,370	47,942,681	100.0%
Total	41,264,511	819,322,946	30,759,100	1,066,910,012	

*Thirty-two reservoirs make up the "All Other Reservoirs" volumes.

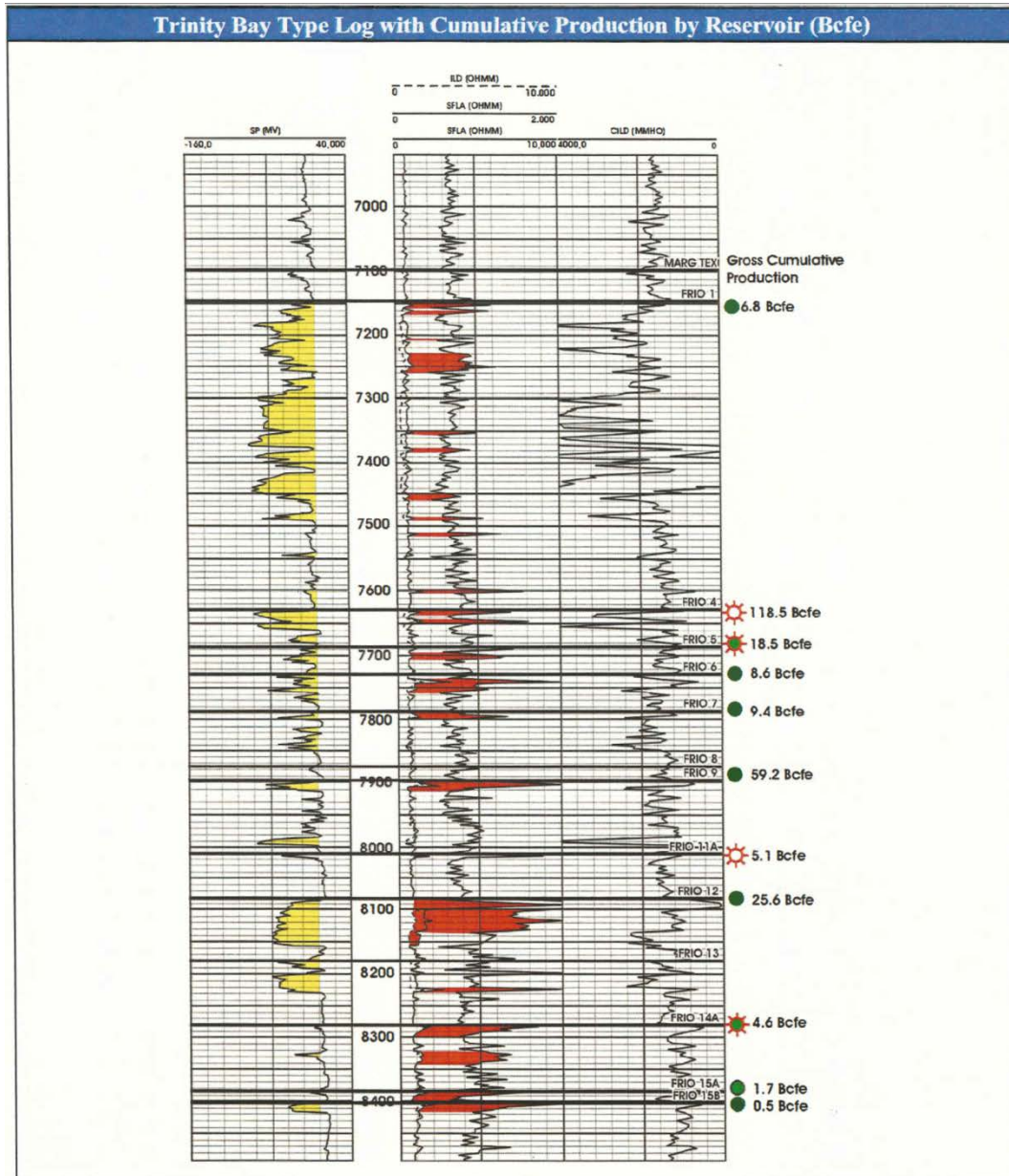
Source: IHS

Galveston Bay, Texas

Trinity Bay Well List	
Well Name	Status
18-19B-37	PDP
18-19B-32	PDP
18-19B-113D	SI
18-19B-113F	SI
18-19B-116D	SI
18-19C-64	PDP
18-19C-68	PDP
18-19C-73	SWD
22-23A-135	PDP
22-23A-100D	SI
22-23A-100F	SI
22-23A-105D	SI
22-23A-105F	SI
22-23A-106D	SI
22-23A-106F	SI
22-23A-116F	SI
22-23A-69D	SI
22-23A-69F	SI
22-23A-74D	SI
22-23A-74F	SI
22-23A-74H	SI
22-23A-75D	SI
22-23A-75F	PDP
22-23A-75H	SI
22-23A-76D	SI
22-23A-76F	SI
22-23A-76H	SI
22-23A-130	PDP
22-23A-131	SI
22-23A-108D	SI
22-23A-108F	SI
22-23A-108H	SI
22-23A-109D	SI
22-23A-109F	SI
22-23A-109H	SI
22-23A-111D	SI
22-23A-111F	SI
22-23A-112D	SI

Trinity Bay Well List	
Well Name	Status
22-23A-112F	SI
22-23A-112H	SI
22-23B-85F	SI
22-23B-85H	SI
22-23B-87D	SI
22-23B-87F	SI
22-23B-87H	SI
22-23B-95D	SI
22-23B-95-F	SI
22-23B-95H	SI
22-23B-95J	SI
22-23B-12	PDP
22-23B-19	SI
22-23B-20	SI
22-23B-21	SI
22-23B-35	PDP
22-23B-51	PDP
22-23C-53	SI
25A-9	SI
25A-29	PDP
25A-122	PDP
25A-133	PDP
25A-134	SI
26-27A-10	SWD
26-27A-38	PDP
26-27A-63D	PDP
26-27A-63F	SI
26-27A-1	PDP
26-27B-120	SWD
26-27B-13	PDP
28A-78D	SI
28A-78F	SI
28A-79D	SI
28A-79F	SI
28A-79H	SI
28A-85D	SI
28B-28	PDP
28B-123	SI
28B-124	PDP
29-32A-119	SWD
29B-22	SI
29B-27	SI

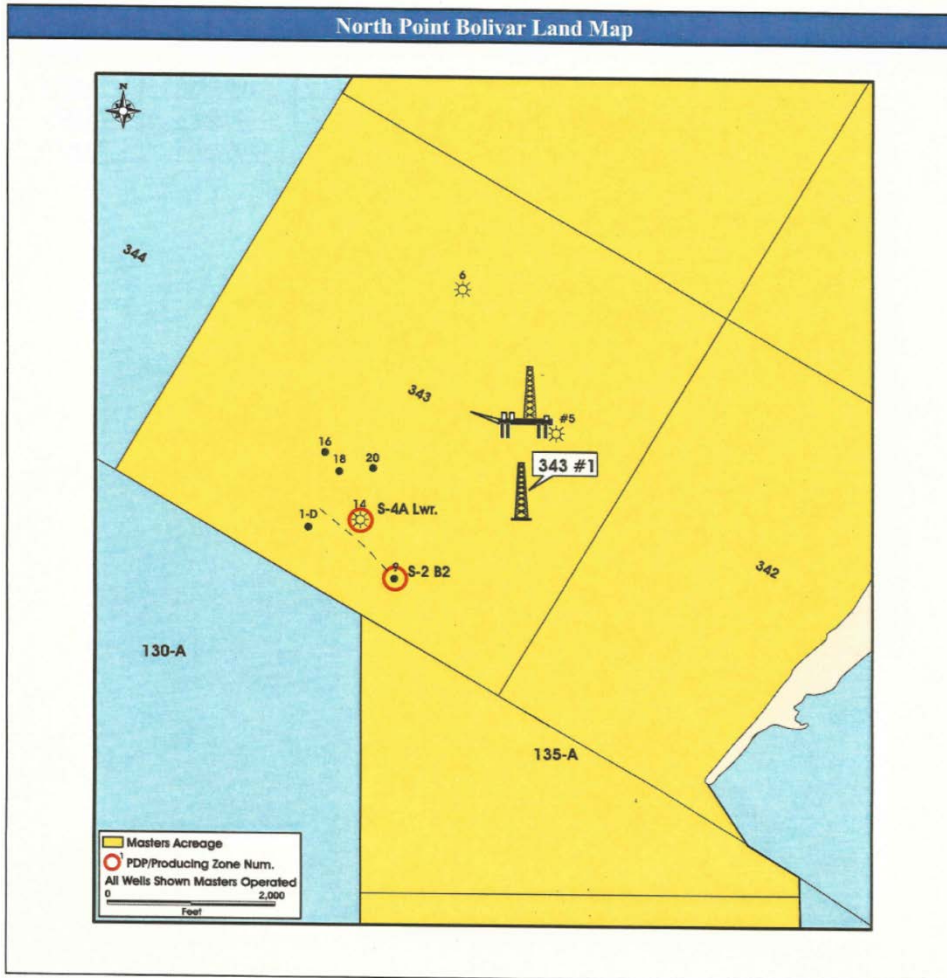
Galveston Bay, Texas



Galveston Bay, Texas

Trinity Bay - Cumulative Production by Reservoir					
Reservoir	Oil Cum	Gas Cum	Water Cum	Mcf Cum	% Cum
FRIO 12	25,889,937	102,297,075	66,076,650	257,636,697	48.4%
FRIO 4	1,219,971	111,143,359	3,466,541	118,463,185	70.6%
FRIO 9/E	6,386,617	21,814,853	32,537,668	60,134,555	81.9%
FRIO 5	1,257,260	10,998,413	3,481,933	18,541,973	85.4%
FRIO 3	133,637	14,707,904	272,111	15,509,726	88.3%
FRIO 7/A	1,327,578	1,395,935	19,740,182	9,361,403	90.1%
FRIO 6	986,133	2,699,123	2,745,601	8,615,921	91.7%
FRIO 14/A/B/C	511,172	5,478,672	1,132,549	8,545,704	93.3%
FRIO 15/A/B/C	727,083	2,701,122	5,050,431	7,063,620	94.6%
FRIO 16	263,311	5,357,925	1,120,752	6,937,791	95.9%
All Other Reservoirs	1,477,494	12,953,895	12,241,253	21,818,859	100.0%
Total	40,180,193	291,548,276	147,865,671	532,629,434	

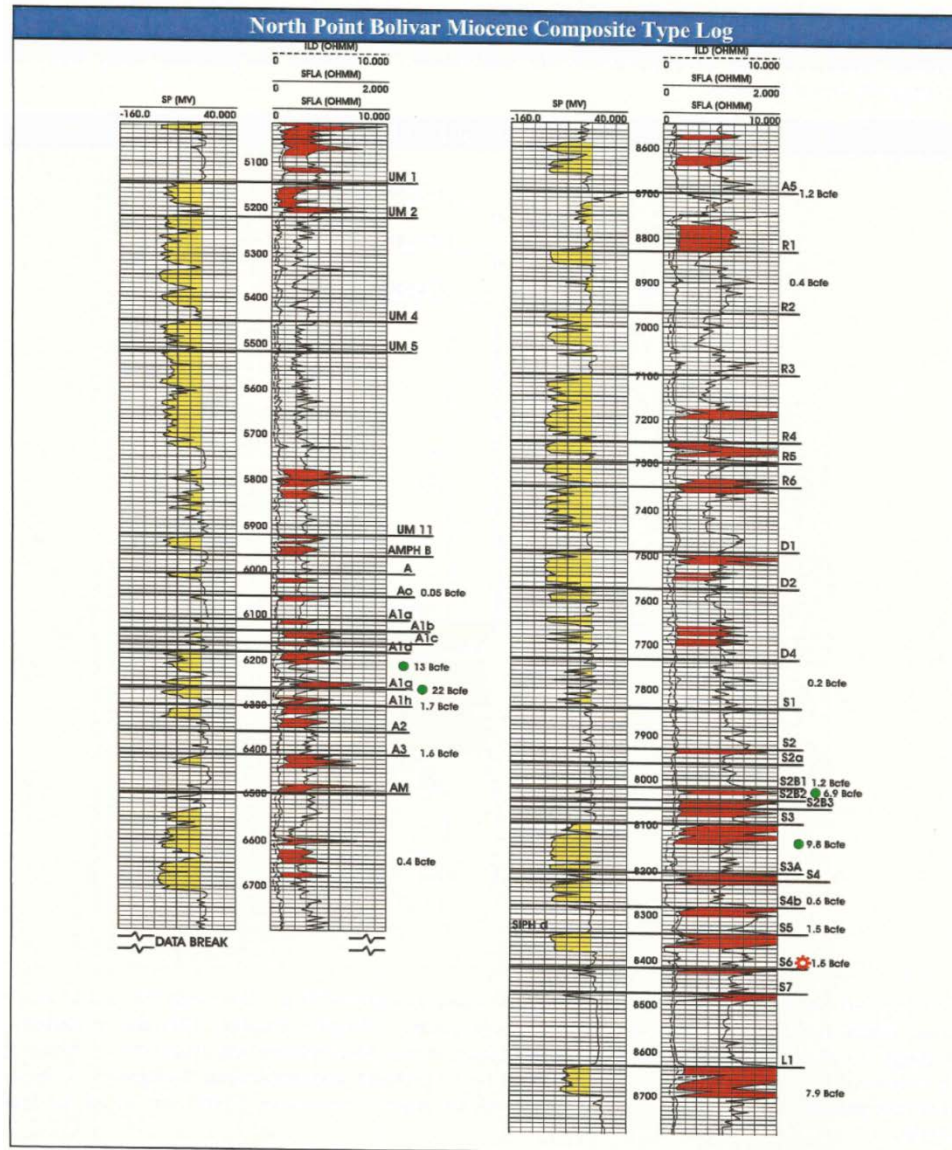
Galveston Bay, Texas



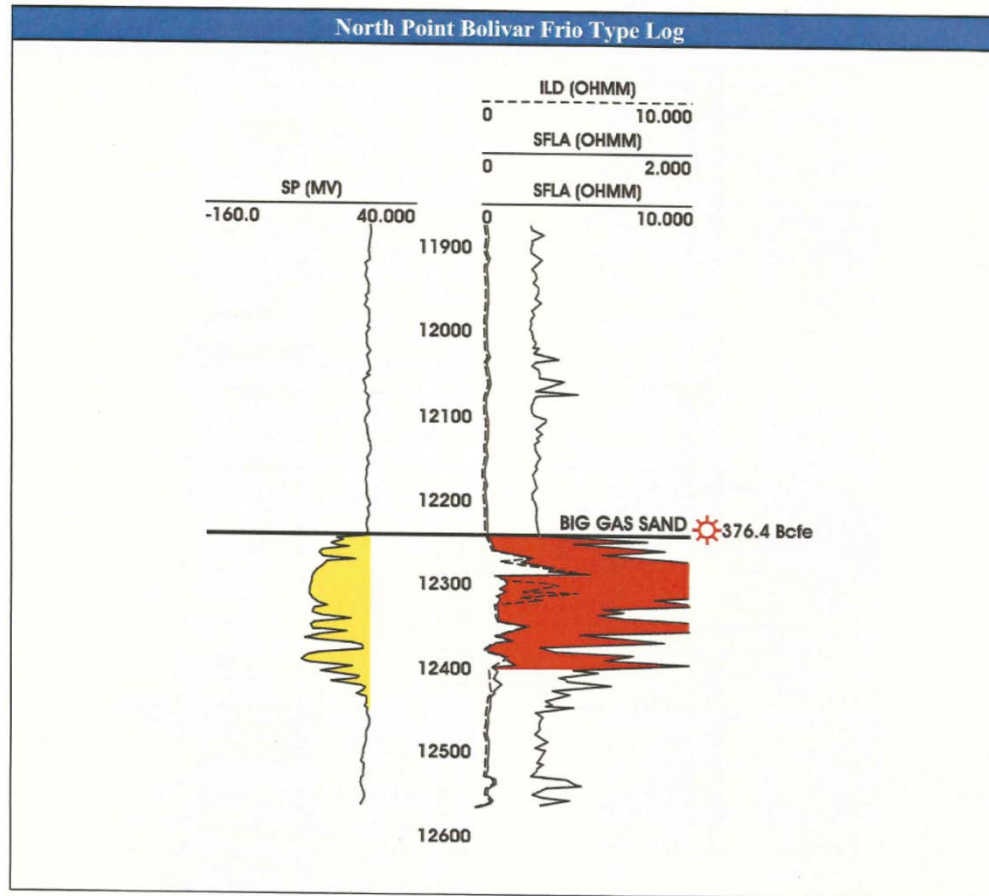
North Point Bolivar Field

- Discovered in 1971 by Union Texas and Occidental
- 27 Miocene and Frio reservoirs productive
- 2,790 gross acres
- 1 producing well and 6 shut in boreholes

Galveston Bay, Texas

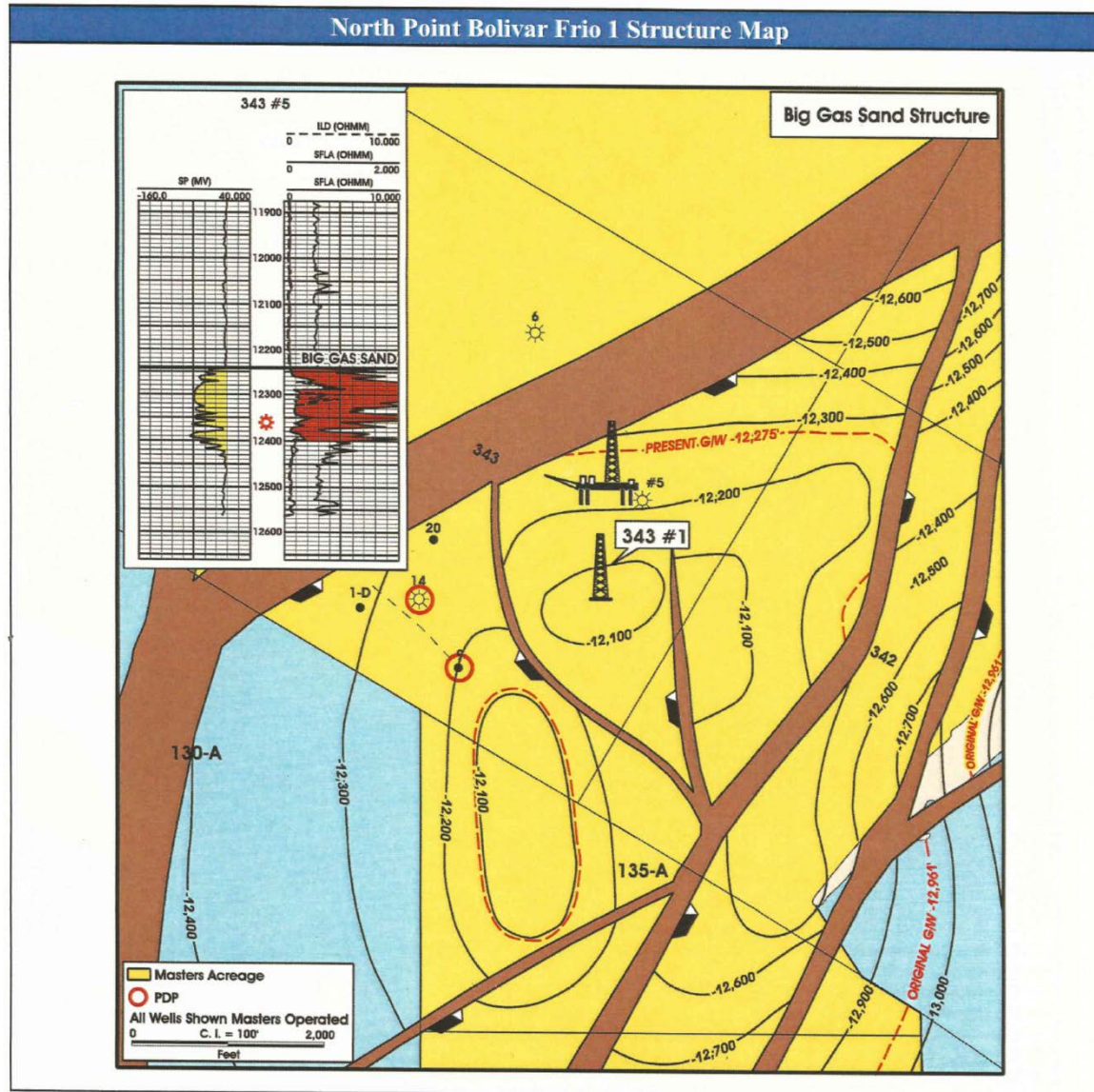


Galveston Bay, Texas



Big Gas Sand(Frio-1) is draped over a large faulted anticline and have excellent reservoir qualities (porosities of 29% and permeability over 1000mD). Reservoir drive is water and pressure depletion. Original pressure was 10,542psi

Galveston Bay, Texas



Galveston Bay, Texas

